

## Instruction Manual WebMotionOverLinux

Edition January 2019  
**Run WebMotion in a Virtual Machine**



### Parameterization over WebMotion

The integrated XENAX® webserver allows setup and parameterization over a web browser. After an automatic self-check, the connected LINAX® linear motor axis, the ELAX® electric slide or the ROTAX® rotary axis with vacuum feed through can instantly be set in motion by click on the Quick Start Button.

## Contents

<b>1 Introduction</b>	<b>2</b>
<b>2 Preparation</b>	<b>3</b>
<b>3 Virtual Box Installation</b>	<b>3</b>
<b>4 Linux Setup</b>	<b>5</b>
<b>5 Common errors during installation</b>	<b>7</b>
5.1 MacOS: Kernel driver not installed	7
5.2 End Kernel panic	7
5.3 Non-US Keyboard	8

## 1 Introduction

Almost all **browser stopped the support for Java**. As a result, the XENAX® Xvi 48V8 and Xvi 75V8S switched from Java to a HTML5 implementation of WebMotion. To access WebMotion on older servo controllers, the **portable browser** from our **webpage** is **recommended**. However, this custom browser is not available for macOS.

### **Another solution is WebmotionOverLinux.**

WebmotionOverLinux is a small, virtual Linux machine designed to run WebMotion. An installation of Virtual Box is required to run WebmotionOverLinux which is described in chapter 2 and 3. Chapter 4 sets up WebmotionOverLinux. Chapter 5 provides solutions for possible errors which can occur during the installation process.

A **known issue of WebmotionOverLinux** is the presentation in the web browser. Some labels and symbols of Webmotion are truncated or shifted a bit.

Another issue is the mouse wheel which does not work in the virtual machine.

## 2 Preparation

The [Linux virtual machine](#) is included in the zip file and consists of a .vbox and a vdi file. Copy both files to a location intended for long time storage on your hard disk. If those files get moved, chapter 3 must be repeated.

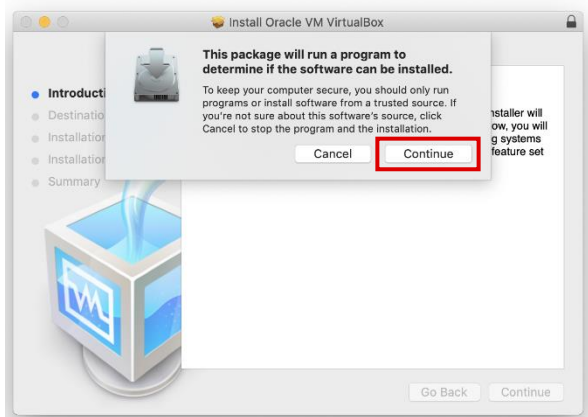


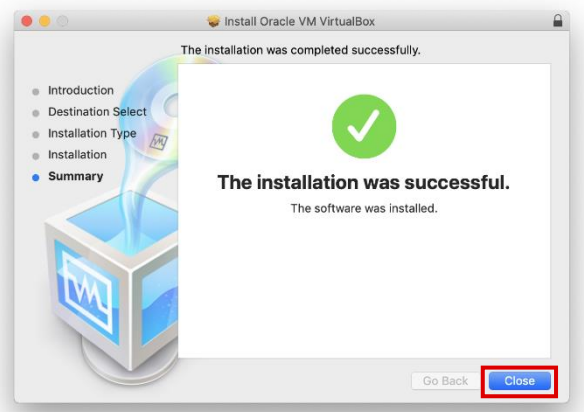
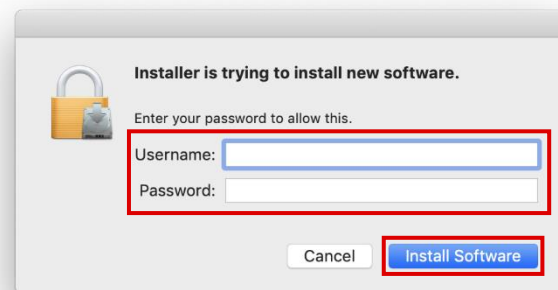
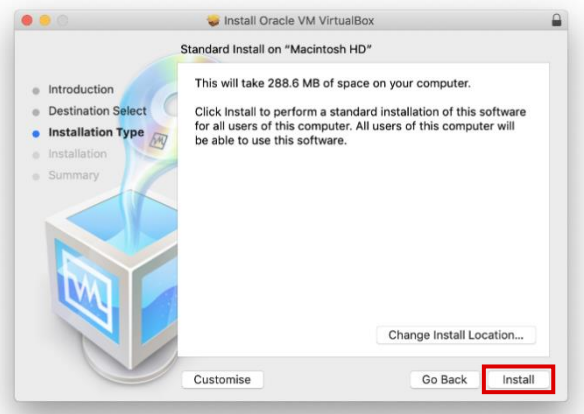
## 3 Virtual Box Installation

If [Virtual Box](#) is already installed, skip this chapter. Choose the download for OS X hosts.



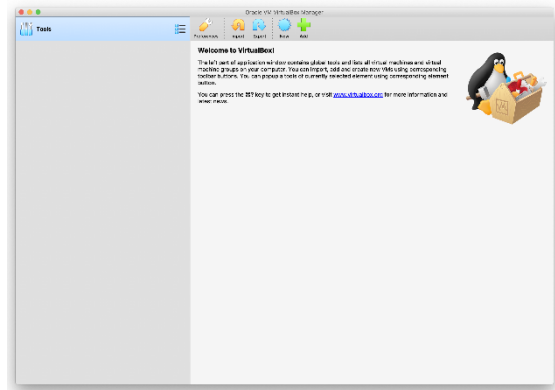
Follow the installer with default settings. The installation process may vary depending on the version of the operating system.



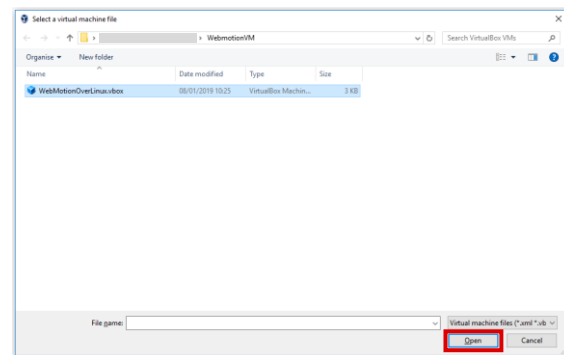


## 4 Linux Setup

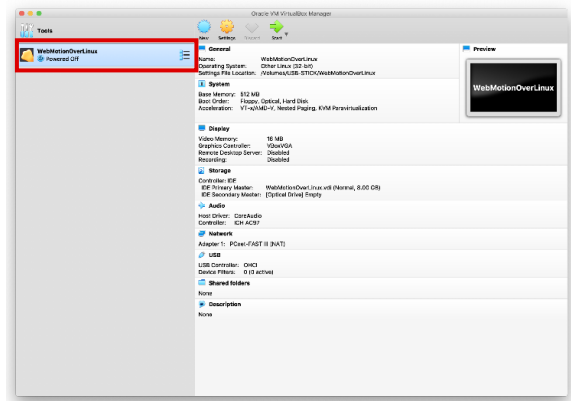
Start Virtual Box and and click Add.



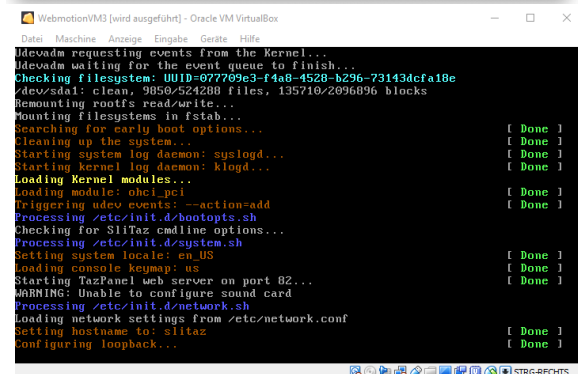
Select the unzipped Linux.



Double-click on WebmotionOverLinux.



Wait until Linux is booted.  
If an error occurs, see [chapter 4](#).



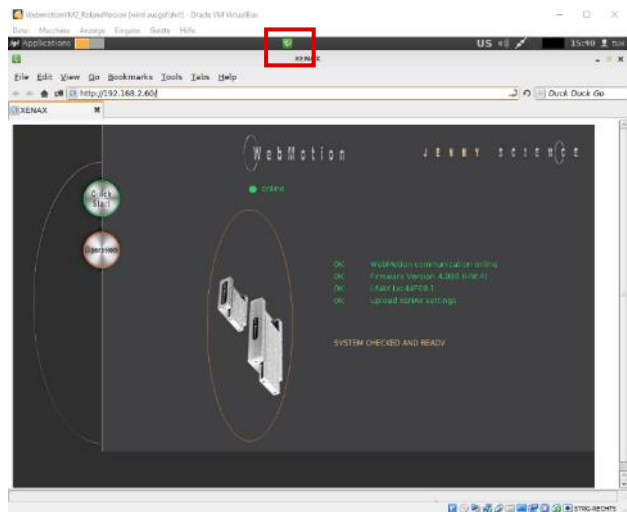
After a short delay, Linux is booted and the browser  
Midori is started automatically.  
To increase the screen size, press **command + c**.

Enter the IP-Address of the XENAX® servo controller.  
Accept risk warnings about java and do **not update**  
**Java**. Select later instead if asked.

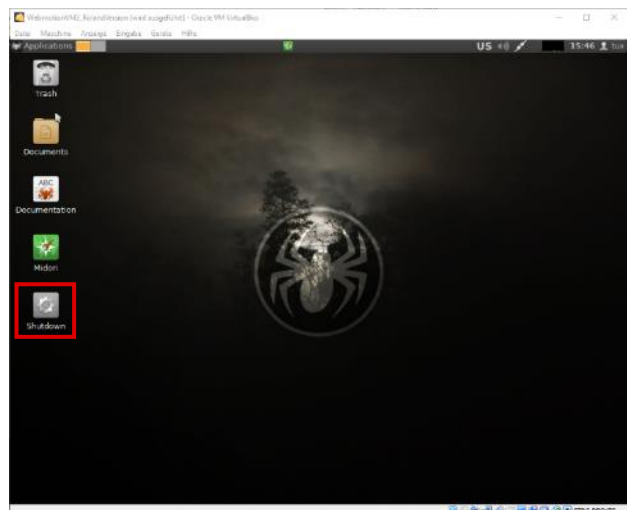
If not a US Keyboard is used, follow the instruction in  
[chapter 5.3](#).



**Shutdown** the virtual machine by clicking on the  
green Midori icon on the top.



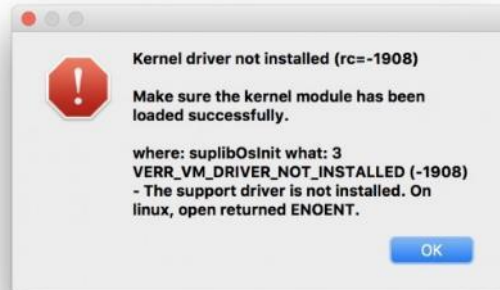
Double click the shutdown link.



## 5 Common errors during installation

### 5.1 MacOS: Kernel driver not installed

MacOS requires an additional installation step if the error in the right occurs.



Go to System Preferences -> Security.



Allow Oracle to load. This option disappears 30 minutes after Virtual Box installation. In that case, a reinstallation of Virtual Box is needed. More information can be found [here](#).



### 5.2 End Kernel panic

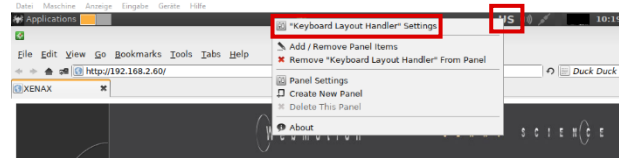
This error occurs on if VT-x is not enabled. VT-x accelerates virtual machines and is normally enabled.

VT-x can be enabled in the BIOS settings in the advanced tap. Please contact the IT support of your company.

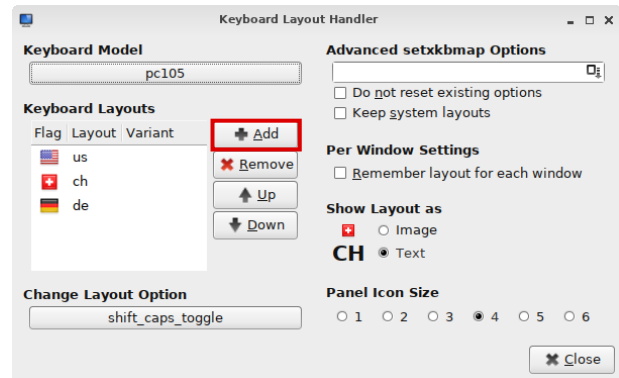
```
Call Trace:
[<c102dfa0>] ? __cpa_flush_range+0x5/0x7
[<c107bc19>] ? on_each_cpu+0x21/0x30
[<c102f9c4>] ? change_page_attr_set_clr+0x250/0x2b8
[<c102f143>] ? set_memory_ro+0x17/0x1b
[<c1773bc1>] ? set_real_mode_permissions+0x46/0x5d
[<c1773b9b>] ? lguest_init+0x2df/0x2df
[<c100045a>] ? do_one_initcall+0xc1/0x14a
[<c15399af>] ? printk+0x16/0x1a
[<c177e95e>] ? disable_smp+0x15/0x6f
[<c177e35a>] ? native_smp_prepare_cpus+0x27b/0x38b
[<c1771a27>] ? kernel_init_freeable+0x51/0x15a
[<c1537bee>] ? kernel_init+0x5/0xaf
[<c1511641>] ? ret_from_kernel_thread+0x21/0x30
[<c15376e9>] ? rest_init+0x5f/0x5f
Code: f6 c4 04 74 2d c7 04 24 00 00 00 09 c1 b8 02 00 00 00 c7 44 24 04 00 00
00 00 c7 44 24 08 00 00 00 00 c7 44 24 0c 00 00 00 00 <66> 0f 38 82 01 eb 30 9c
50 0d 74 26 00 09 c1 fa 90 0d 74 26 00
RIP: [<c102chf1>] native_flush_tlb_global+0x34/0x6f SS:ESP 0068:df441ca8
---[ end trace 1f71803e0b002479 ]---
Kernel panic - not syncing: Attempted to kill init! exitcode=0x00000000
--[ end Kernel panic - not syncing: Attempted to kill init! exitcode=0x00000000
```

### 5.3 Non-US Keyboard

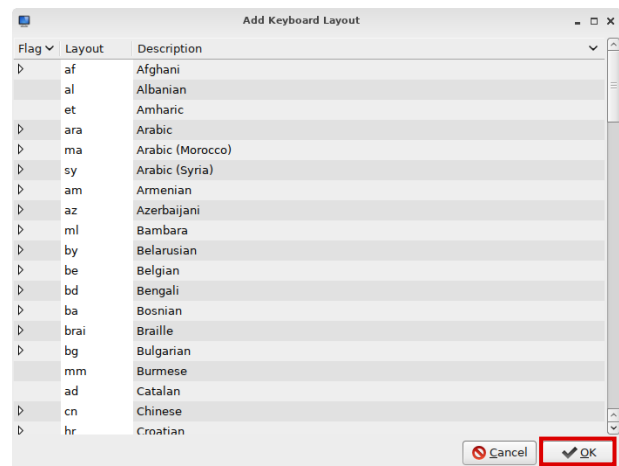
Right click on the US symbol in the upper right corner and select Keyboard Layout Handler Settings.



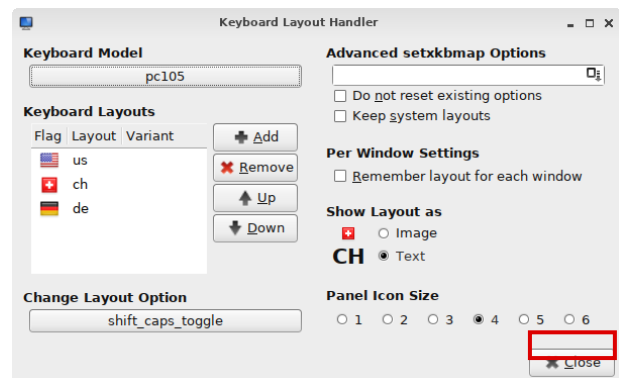
Click Add.



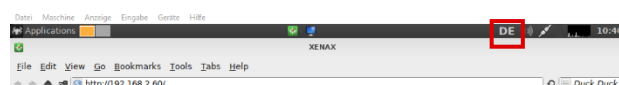
Select your keyboard layout and press OK.



Click close.



Left click on the US symbol until the desired layout appears.





## Note

This instruction manual contains copyright protected information. All rights are reserved. This document may not be in its entirety or partially copied, duplicated or translated without the prior consent of Jenny Science AG.

Jenny Science AG grants no guarantee on, or will be held responsible for, any incidents resulting from false information.

Information in this instruction manual is subject to change.

Jenny Science AG  
Sandblatte 7a  
CH-6026 Rain, Switzerland

Tel +41 (0) 41 455 44 55  
Fax +41 (0) 41 455 44 50

[www.jennyscience.ch](http://www.jennyscience.ch)  
[info@jennyscience.ch](mailto:info@jennyscience.ch)

© Copyright Jenny Science AG 2019