

Instruction Manual WebMotionOverLinux

Edition January 2019
Run WebMotion in a Virtual Machine



Parameterization over WebMotion

The integrated XENAX® webserver allows setup and parameterization over web browser. After an automatic self-check, the connected LINAX® linear motor axis, the ELAX® electric slide or the ROTAX® rotary axis with vacuum feed through can instantly be set in motion by click on the Quick Start Button.

Contents

1 Introduction	2
2 Preparation	3
3 Virtual Box Installation	3
4 Linux Setup	5
5 Common errors during installation	7
5.1 Windows: end Kernel panic	7
5.2 Non-US Keyboard	8

1 Introduction

Almost all **browser stopped the support for Java**. As a result, the XENAX® Xvi 48V8 and Xvi 75V8S switched from Java to a HTML5 implementation of WebMotion. To access WebMotion on older servo controllers, the **portable browser** from our **webpage** is **recommended**. However, this custom browser is not available for macOS.

Another solution is WebmotionOverLinux.

WebmotionOverLinux is a small, virtual Linux machine designed to run WebMotion. An installation of Virtual Box is required to run WebmotionOverLinux which is described in chapter 2 and 3. Chapter 4 sets up WebmotionOverLinux. Chapter 5 provides solutions for possible errors which can occur during the installation process.

A **known issue of WebmotionOverLinux** is the presentation in the web browser. Some labels and symbols of Webmotion are truncated or shifted a bit.

Another issue is the mouse wheel which does not work in the virtual machine.

2 Preparation

The [Linux virtual machine](#) is included in the zip file and consists of a .vbox and a vdi file. Copy both files to a location intended for long time storage on your hard disk. If those files get moved, chapter 3 must be repeated.

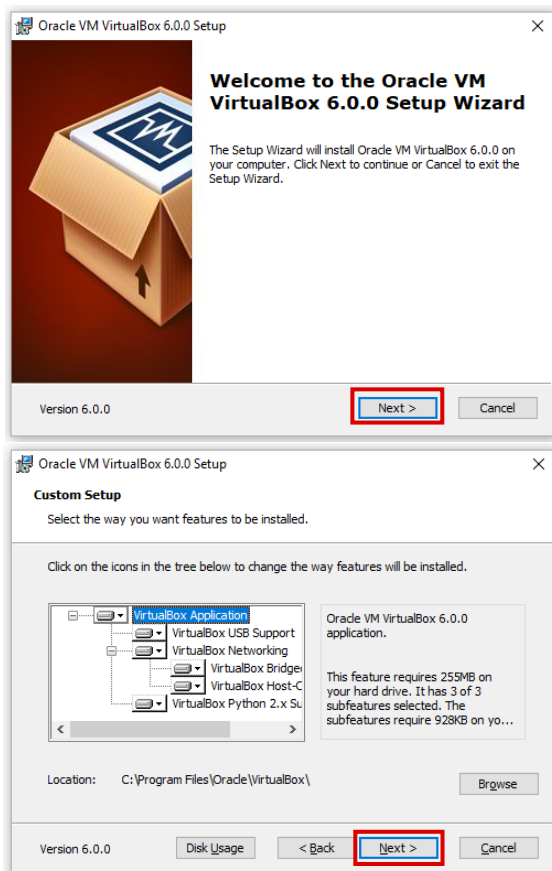


3 Virtual Box Installation

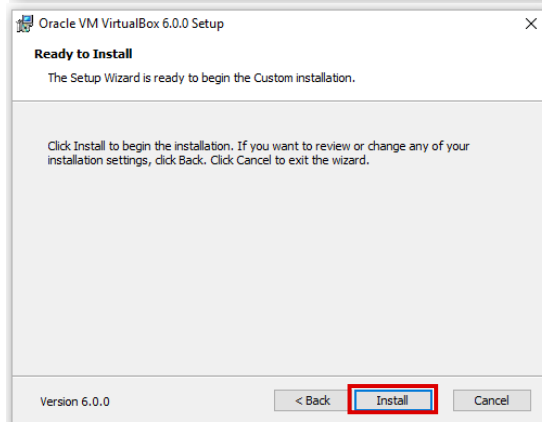
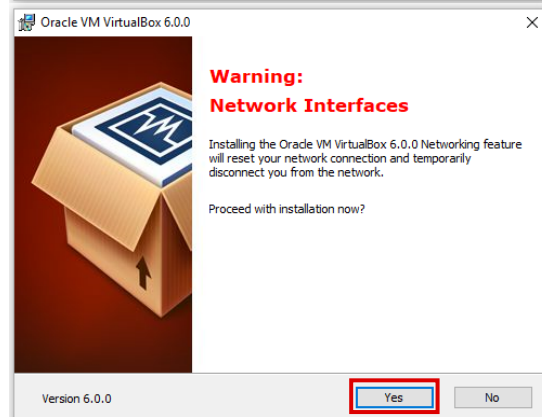
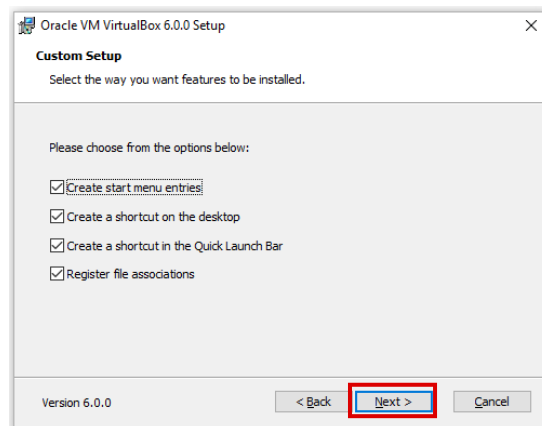
If [Virtual Box](#) is already installed, skip this chapter. Choose the download for your operating system.



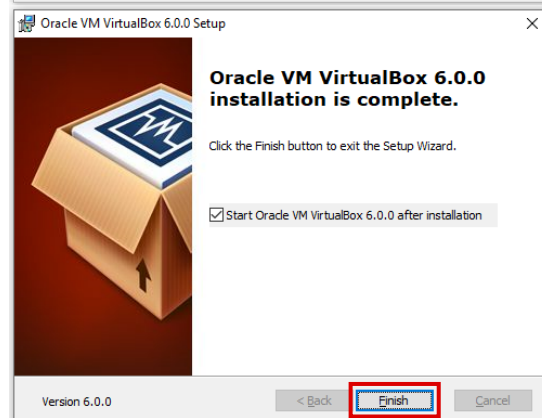
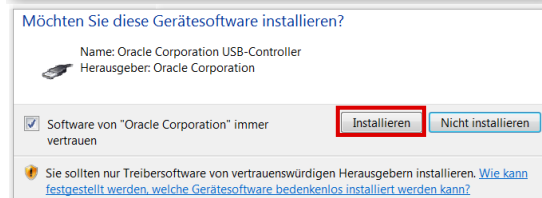
Follow the installer with default settings.



The installation process will interrupt your network connection temporarily.



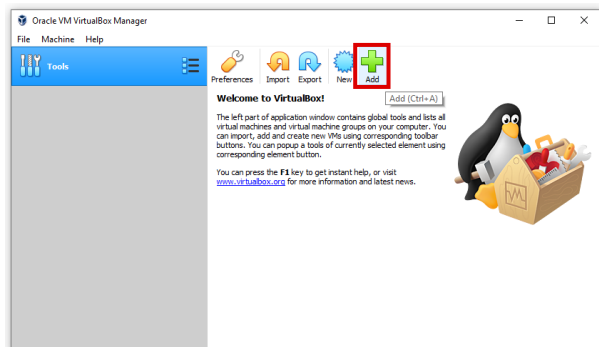
The USB driver allows VirtualBox to access USB drives. This is useful for file exchange between host computer and the virtual machine.



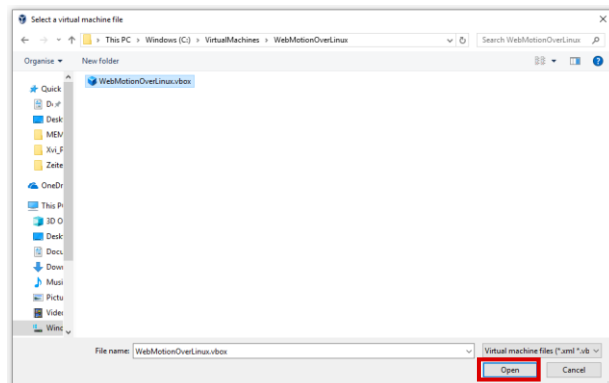
4 Linux Setup

The [Linux virtual machine](#) is included in the zip file and consists of a .vbox and a vdi file. Copy both files to a location intended for long time storage on your hard disk. If those files get moved, chapter 3 must be repeated.

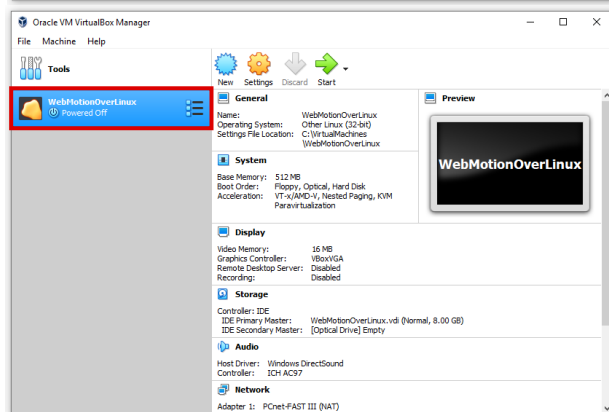
Start Virtual Box and and select Add



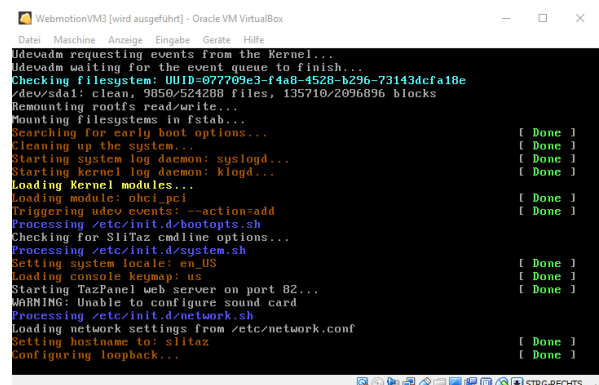
Select the unzipped .box file.



Double-click on WebmotionOverLinux.



Wait until Linux is booted.



After a short delay, Linux is booted and the browser Midori is started automatically.

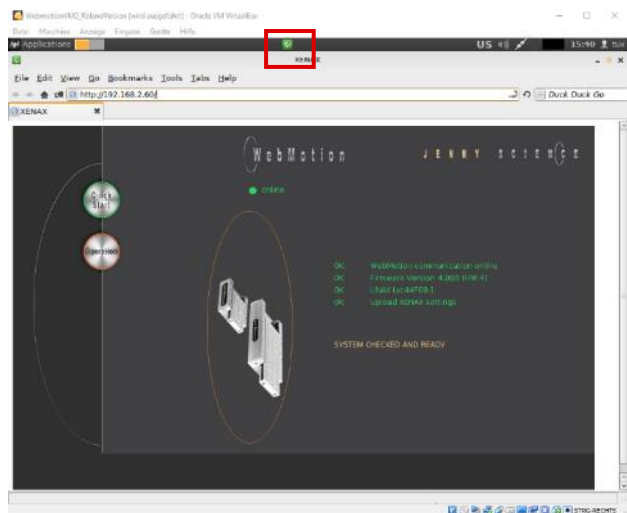
If this is not the case, go to the next chapter where common errors are described.

Enter the IP-Address of the XENAX® servo controller. Accept risk warnings about java and do **not update Java**. Select later instead.

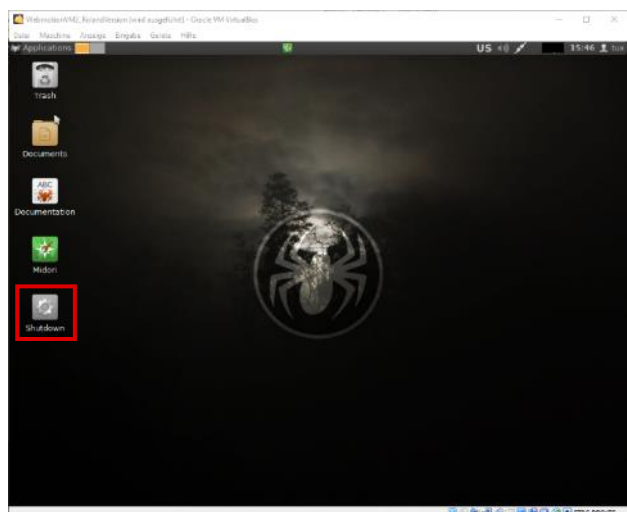
If not a US Keyboard is used, follow the instruction in [chapter 5.2](#).



Shutdown the virtual machine clicking on the green Midori icon on the top.

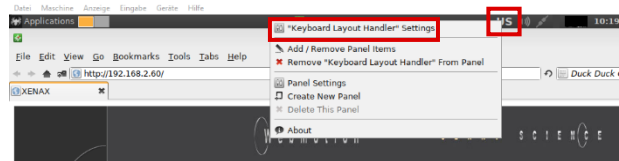


Double click the shutdown link.

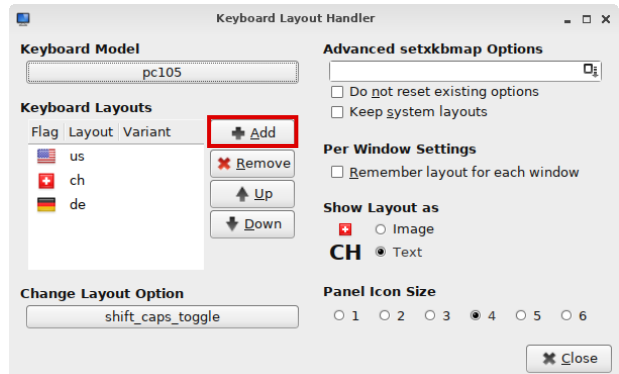


5.2 Non-US Keyboard

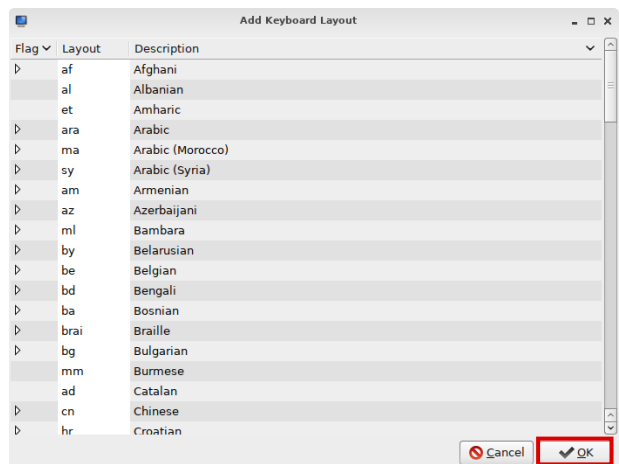
Right click on the US symbol in the upper right corner and select Keyboard Layout Handler Settings.



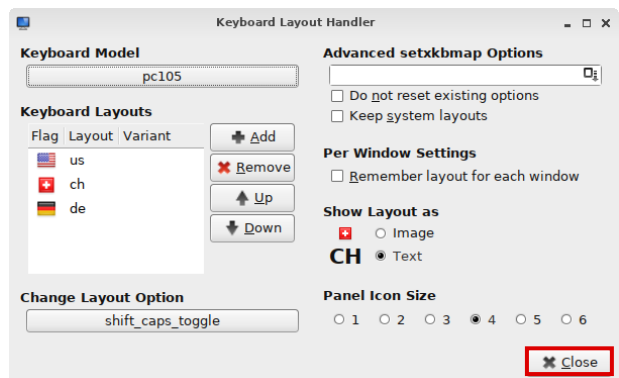
Click Add.



Select your keyboard layout and press OK.



Click close.



Left click on the US symbol until the desired layout appears.



Note

This instruction manual contains copyright protected information. All rights are reserved. This document may not be in its entirety or partially copied, duplicated or translated without the prior consent of Jenny Science AG.

Jenny Science AG grants no guarantee on, or will be held responsible for, any incidents resulting from false information.

Information in this instruction manual is subject to change.

Jenny Science AG
Sandblatte 7a
CH-6026 Rain, Switzerland

Tel +41 (0) 41 455 44 55
Fax +41 (0) 41 455 44 50

www.jennyscience.ch
info@jennyscience.ch

© Copyright Jenny Science AG 2019