

Quick Start Synchronous Operation
Jenny Science
XENAX® Xvi EtherNet/IP® and
Studio5000® Logix Designer

Version 1.0.0

Edition June 2020



EtherNet/IP™

XENAX® Ethernet servo controller with
EtherNet/IP® Busmodul

Document Summary

The goal of this quick start manual is to demonstrate the cyclic synchronous operation mode with Jenny Science axes. Two demo applications are available for this purpose.

Contents

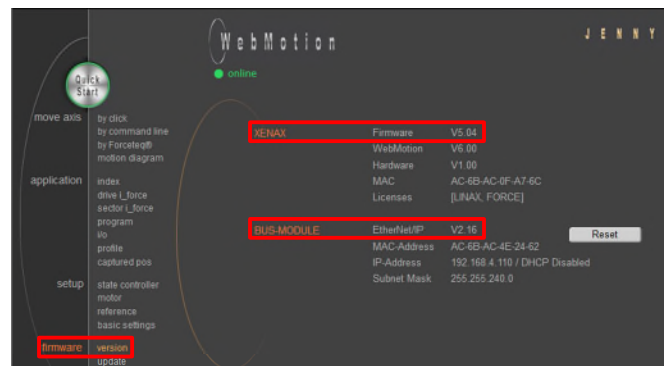
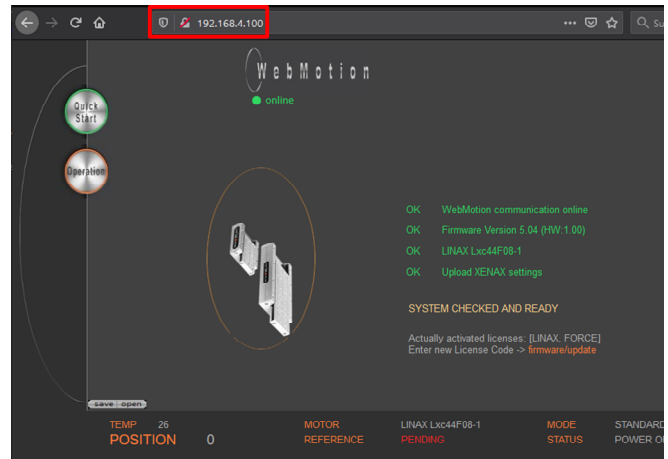
1 Firmware update	3
1.1 XENAX® Firmware update	3
1.2 Busmodul Firmware update	5
2 Run Demo Application	6

1 Firmware update

The XENAX® firmware as well as the Busmodule firmware must be updated to the required version or newer. The currently installed version can be seen in Webmotion. Enter the IP address of the XENAX® in a browser to open Webmotion.

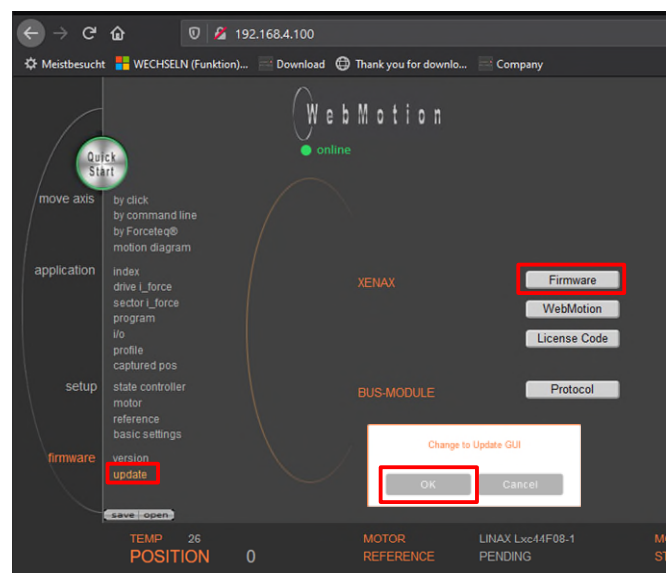
	required version
XENAX®	5.04
Busmoudl	2.16

Follow this chapter to update the XENAX® to the required firmware version. This chapter can be skipped if this version or a newer one is already installed.

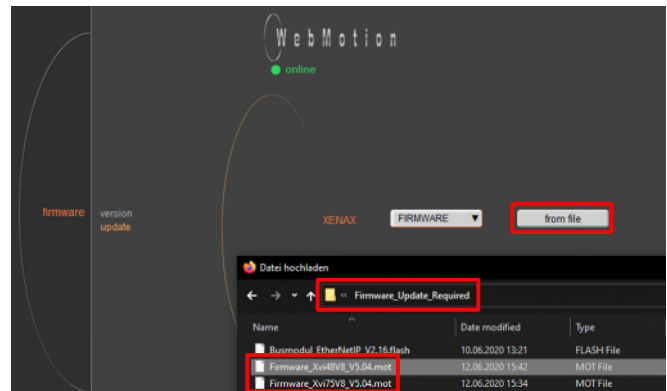


1.1 XENAX® Firmware update

Under firmware -> update -> XENAX® press Firmware.



Update from file und select firmware Xvi48V8 or Xvi75V8 depending on your XENAX® version.



Wait until the firmware is downloaded.



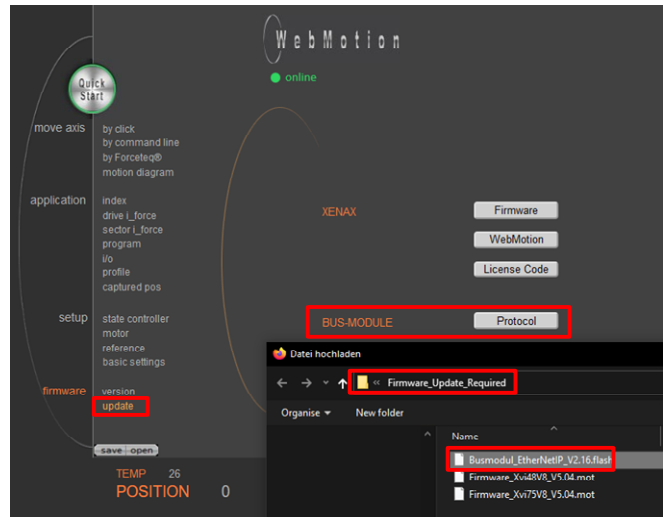
Exit update GUI.



1.2 Busmodul Firmware update

Under firmware -> update -> Bus-Module press Protocol.

The requested Busmodule firmware can be found in the firmware folder.



Wait until the download is finished. The XENAX® will restart automatically after the download.

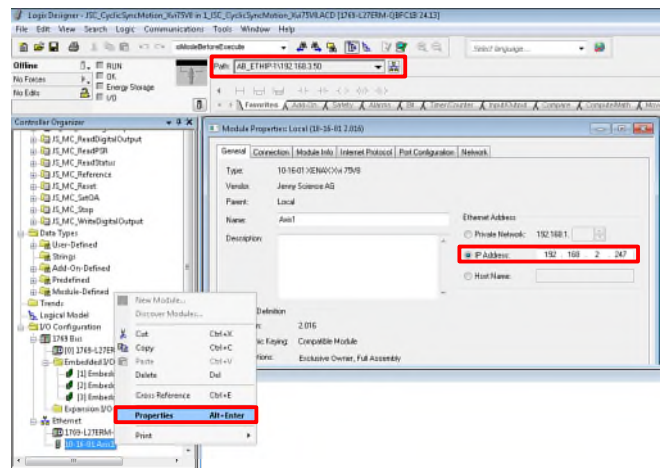
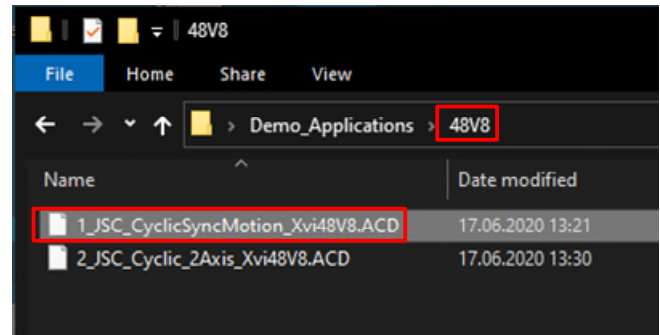


2 Run Demo Application

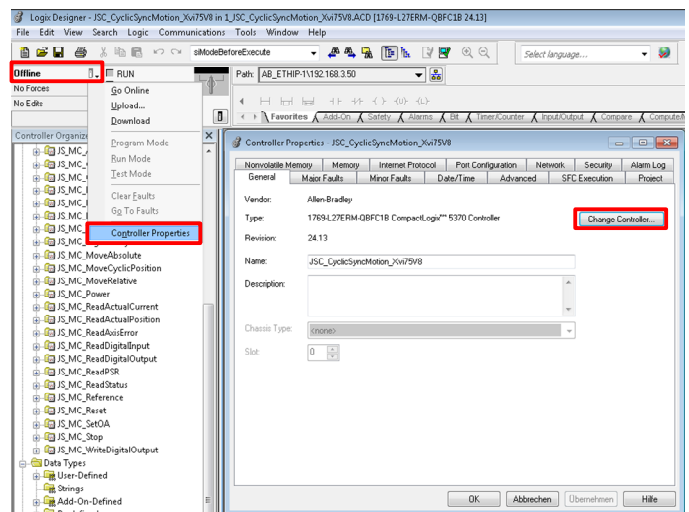
In the “Demo Application” folder, select the subfolder which matches with your XENAX® model.

There are 2 demo applications available. Start with the simple one.

Change the IP Address of the XENAX® axis as well as the Path to the PLC.



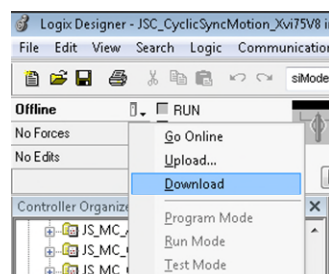
Change the controller type.



Download the demo application to the PLC.

The first demo application move the axis between two positions.

The second demo application draws circles as shown in the [video](#).



This instruction manual contains copyright protected information. All rights are reserved. This document may not be entirely or partially copied, duplicated or translated without the prior consent of Jenny Science AG.

Jenny Science AG grants no guarantee on, or will be held responsible for, any incidents resulting from false information.

Information in this instruction manual might be subject to change.

Jenny Science AG
Sandblatte 7a
CH-6026 Rain

Tel +41 (0) 41 455 44 55
Fax +41 (0) 41 455 44 50

www.jennyscience.ch
info@jennyscience.ch

© Copyright Jenny Science AG 2020

Manual Studio-5000 Allen Bradley-XENAX®

QuickStart_Synchronous_Operation.docx/18.06.2020/ef